



**"H"**

## 2022 SANLORENZO SX112

The Sanlorenzo SX 112 is the epitome of Italian Yacht building. Delivered in 2022 this outstanding vessel presents in bristol mint condition. H is one of the rare SX 112 with the Owner 's Suite on main deck level plus 4 additional guest cabins on lower deck. She features a stunning custom made interior, combining elegance and comfort, showcasing Sanlorenzo's craftsmanship and attention to detail. One of her highlight features is the multipurpose aft deck with folding down bulwarks, creating an enormous beach club with direct access to the sea. The maximum speed of the vessel is 23 knots and she cruises comfortably at 20 knots. At a low cruising speed of 12 knots, H has a range of almost 1.500 nautical miles. She is powered by 4x 1.000 hp/each Volvo diesel engines with IPS drives and of course she is also equipped with a zero speed stabilization system

### DESCRIPTION:



Guest Cabins: 5  
Crew Cabins: 3

Guest Heads: 5  
Crew Heads: 2



Length  
34 m



Draught  
1.5 m



Beam  
8 m



Engine  
4 x VOLVO D13B IPS 1350S  
(1000hp)

### TEHNIICAL SPECIFICATION:

Built year: 2022

Gross Tonnage: 228 GT

Water tank: 2200 l

Berths: 10

Fuel tank: 18800 l

Engine hours: 900

Generator hours: 1300

**ASKING PRICE:**

**€ 12 100 000 EXCL. VAT**



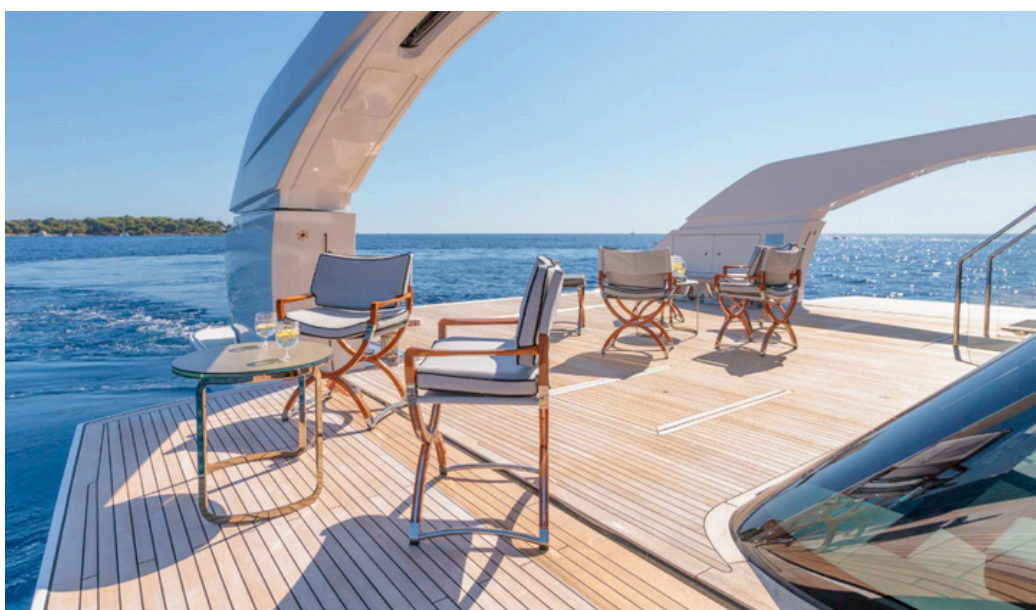
2022  
SANLORENZO  
SX112  
  
EXTERIOR





2022  
SANLORENZO  
SX112

EXTERIOR





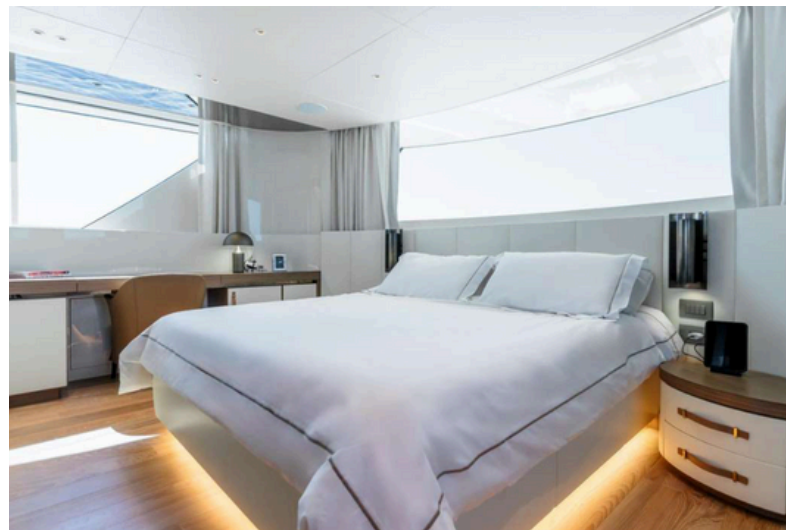
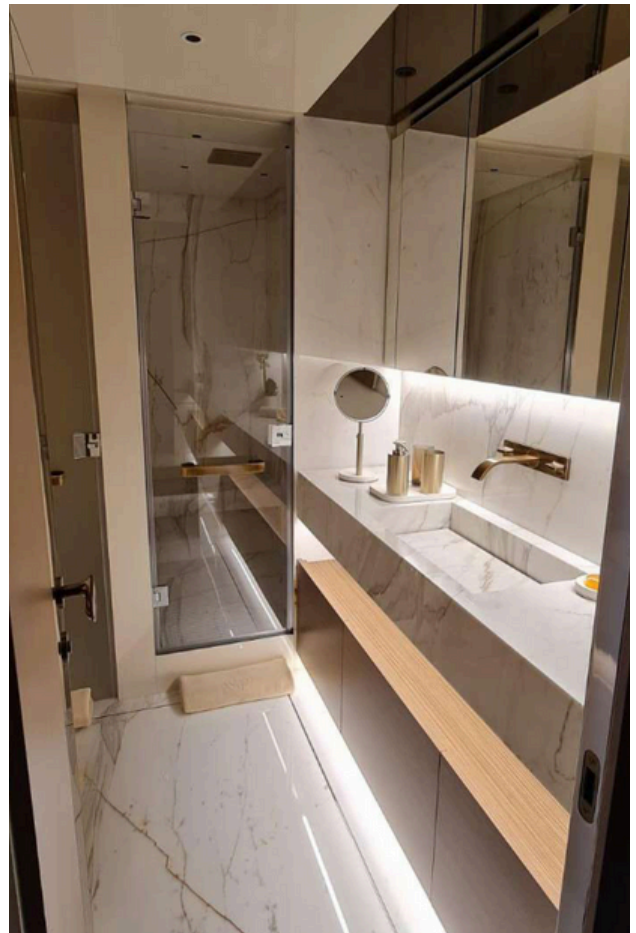
2022  
SANLORENZO  
SX112  
INTERIOR



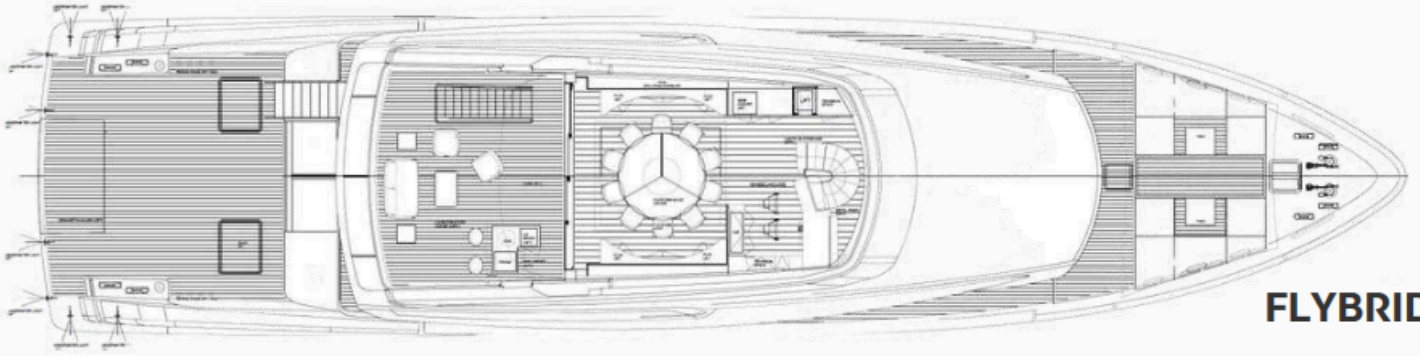


2022  
SANLORENZO  
SX112

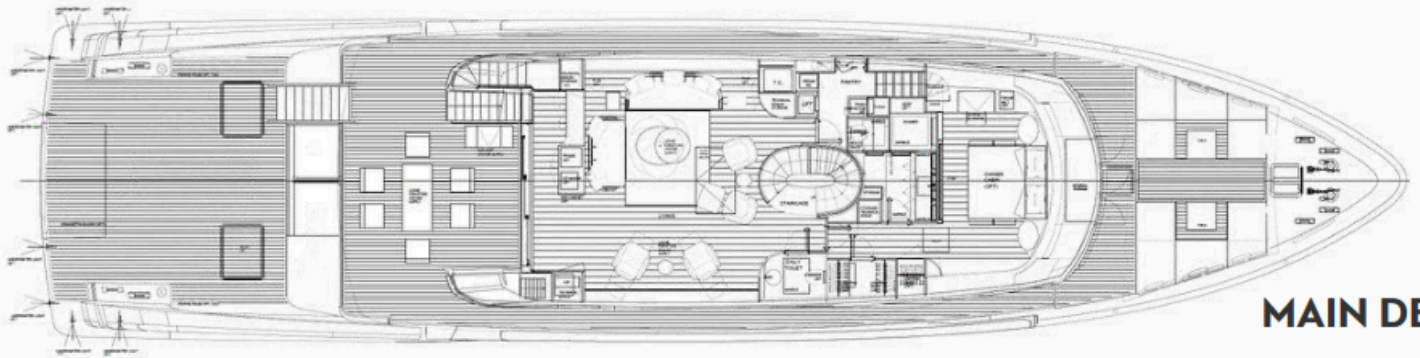
INTERIOR



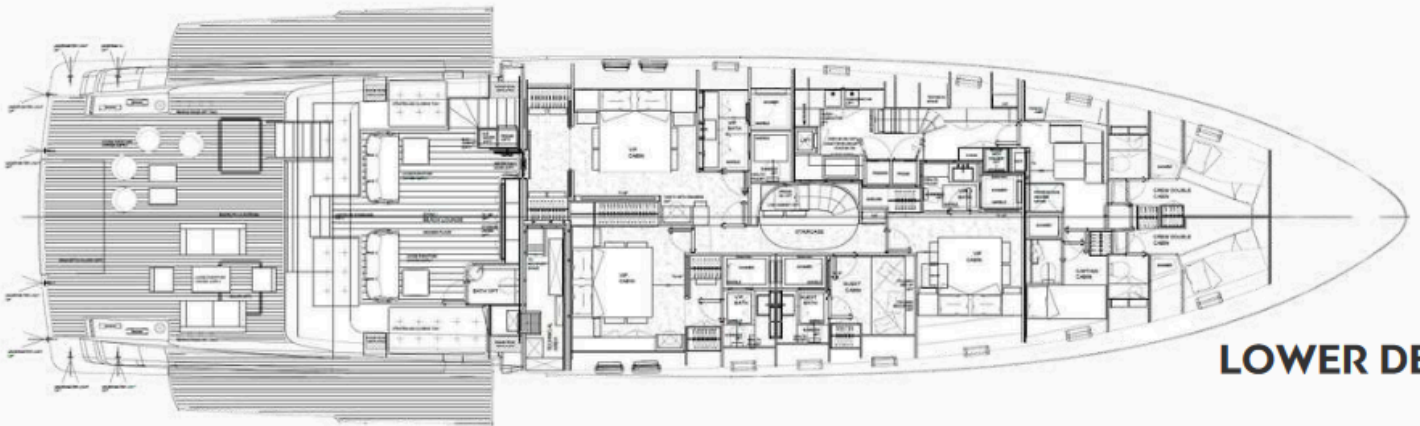




**FLYBRIDGE**



**MAIN DECK**



**LOWER DECK**



## TECHNICAL DETAILS:

Builder: Sanlorenzo

Year built: 2022

Hull:GRP

Superstructure: GRP

Class: RINA

Length: 34 metres

Beam :8 metres

Draft: 1.5 metres

Gross Tonnage: 228 GT

Engines: 4 x 1000 Hp Volvo D13B IPS 1350S

Engine hours: approx 900

Max. speed: 23 knots

Cruising speed: 20 knots

Maximum range: 1.500 nm at 12 knots

Generators: 1 x 55 kw, 1 x 70 kw

Generator hours: approx. 1.300



Fresh water: 2.200 litres

Fuel: 18.800 litres

OTHER FEATURES:

Cablemaster - Glendinning CMS for shore sockets 100/125A (one socket)

Parallel system for generators

Seamless transfer between shore power and generators

Dual electrical sockets: UK plug together with the Shuko European plug, one of each in each cabin. USB sockets on the bed side tables

Insinkerator (food waste disposal) in the galley

N.17 double electrical sockets throughout the interior of the boat

N.19 UK plug together with the EU/US plug, one in each cabin

N.16 USB or USBC plug together with the EU/US plug, one in each nightstand

Electronic advanced fire and smoke alarms system

Open portholes alarm

CCTV IP Panasonic (with DVR): 2 fixed in cockpit+ 2 fixed in lateral passageways, 1 pan & tilt + 2 fixed in engine room

Additional touch screen monitor 12" (ship monitoring system)

ELECTRONICS:

Joystick Volvo for engines IPS transmissions - Second control station in cockpit

Raymarine Diamond navigation package

SATELLITE AND COMMUNICATION SYSTEMS:

TV-sat KVH TVS Dual switch arbitrato for Sat TV antenna

AV APPLIANCES:

Internet Wi-fi System 5G with harbour hot spot Antenna

Diamond Audio/Video package

Audio Video Upgrade on top of Diamond package



Sky Lounge:

N. 01 Lifting mechanism for TV

N. 02 decoder

Main salon:

N. 02 Predisposition for decoder

Main Deck Owner's Cabin (ex Dining):

N. 02 Predisposition for decoder

Gym: Additional TV station:

N. 01 DENON AVR-X3700 AN receiver

N.. 02 Predisposition for decoder

N° 01 Apple TV 4K

N. 01 Crestron DIN-AP3 processor+ power supply

N. 01 Apple Mini iPad 5 64 GB

N. 01 Belkin docking station for Mini iPad

Speakers Upgrade on top of Diamond Package:

Internal Speakers; Speakers B&W CCM663RD, insted of B&W CCM362

External Speakers: Speakers JL Audio M6-770-C-GW waterproof speakers.

N. 1 TV 85", with full size stopsol mirror in the gym area

N. 1 TV 75 in the main salon (diff. From 55")

N. 1 Mechanism Upgrade for the TV 75" {instead of 55"} in the main salon

N. 1 TV 85" in the owner cabin (diff. From 50")

N. 1 TV 85" in the portside VIP (diff, From 32")

N. 1 TV 43" in the stardbord VIP {diff. From 32"}  
N. 1 TV 43" in the fwd VIP {diff. FroDJ Predisposition

Upper Deck External Aft:

N. 1 Di console

N. 1 Di console

N. 2 XLR inputs for DJ console

N. 1 DUX party systemN° 02 XLR sockets for active speakers+ subwoofer

Main Deck Cockpit:

N. 2 XLR sockets for active speakers+ subwoofer

Swim Platform (Second One Gym):

N. 2 XLR sockets for active speakers+ subwoofer

Watertight Sokets for DJ Predisposition Upper Deck External Aftm 32")

N. 4 Watertight Sockets Palagi IP 65 220V (n.3 for active speakers+ n. l of DJ

Consolle)

N. 4 Watertight Sockets Palagi IP 65 for XLR connectors

Main Deck Cockpit:

N. 3 Watertight Sockets Palagi IP 65 220V for active speakers

AUDIO AND VIDEO APPLIANCES:

N. 2 Watertight Sockets Palagi IP 65 for XLR connectors

N. 3 Watertight Sockets Palagi IP 65 220V for active speakers

N. 2 Watertight Sockets Palagi IP 65 for XLR connectors

Party Mode in the following areas: Upper Deck skylounge +Aft

Main Deck salon +Aft Gym + Swimplatform

HOUSEHOLD APPLIANCES:

N. 1 additional lower Fridge Gaggenau/Miele in owner cabin

Wine cooler Gaggenau/Miele 34 bottles in Salon

Additional fridge in the galley

Oven 90 cm MIELE

Professional washing machine Miele - different from standard

Professional drying machine Miele - different from standard

N. 2 trash compactors IMC Krushr K400

N. 3 Additional low fridges (fridge with drawers)

N. 3 Additional ice makers: 1 in the gym, 1 on MD salon, 1 on flybridge

N. 3 Additional small fridge 42 Lin the cabinet underneath the stairs

LIGHTNING:

Dimmer package for interiors (all cabins, bathrooms and galley)

Dimmer package for exteriors

Strip led underneath the beds and the washbasins

N. 2 floor lamp in the main salon

N. 4 table lamps in the flybridge, mod. K Tribe by Flos,

N. 2 table lamps mod Atollo by Oluce In the owner cabin

N. 1 ceiling lamp mod. KT ribe suspension

Lights on the main staircase and underneath of the bar cabinet in the main salon

Spotlights on the gym area steps

THRUSTERS AND STABILIZERS:

Electric stabilizers zero speed (at anchor and under navigator)

ENGINE ROOM EQUIPMENT:

Tender fuel filling system with electric pump

Water maker Idromar 250 l/h

Compressed air system with no.4 connection: bow area, beach area, engine room, flybridge

Upgrade second generator 70kW (different from standard 55 kW)



## COMPLIMENTS FOR THE INTERIOR:

Air conditioning system upgrade to become SUPER tropical Increasing of sea water piping diameter Increasing of recirculation water piping diameter Additional chiller 35 kw Additional sea water and circulation pumps Electrical switchboard modification Upgrade of size of n.6 fan coils (from 12000 BTU to 24000 BTU) Electric black out shade (each) - Button control in VIP (x2) and Guest cabins Master cabins on main deck Electric curtain - different from standard manual system (each) - Button control in Salon and in Dining Area 4 separated electric black out shades in the master cabin. Wooden floor throughout the owner cabin Walls in wood throughout: Alpi l 0.18 walnut. Ceiling sections doors (lower deck door excluded) and wall Inserts, frames. in Rimex metal Madras lino mate (patterned} mirror in the main salon sides and VIP sliding doors Door handles mod. Conca by Olivari. superbronze finish

Faucets mod. Aguablu by Zucchetti bronze finish

Water tight door and decorative door between the VIP cabin and the gym Cabinet fronts (In the master cabin, upper deck dining area and stbd VIP) and leather inserts in the portside VIP cabin

N. 10 Custom cabinet and drawer handles in thick leather

Leather ceilings in the main salon and master cabin

Calacatta Borghini marble in the master, (floor, shower tray, sink front, top and backsplash)

All the shower walls and bench, 2 walls to the sides of the sinks in the owner bathroom in Calacatta Borghini marble

Integrated sinks in marble in the owner bathroom - 1 in total

Floor in Gold calacatta marble in the day toilet

Free standing, backlit sink in onyx, in the day toilet

E-brooze toilets by Tecma - 6 in total - Toilet in the gym excluded

Additional low cabinet/bar and foldable faucet, in the main saloon

Curved additional cabinets in the flybridge

N. 16 Custom cabinet and drawer handles in thick leather

Metal structure of the main staircase: perlato WM03400 l lea lacquered finish

- metallic finish

## INTERIOR FURNITURE:

Owner cabin: armchair mod. Blossom by Giorgetti

Flybridge, dining area: n 1 dining table mod Crown by Flexform Mood with top and lazy Susan in gold calacatta marble

N 10 armchairs (with arms) Judit by Flexform Mood.

N 2 Cabinet front doors in Rimex and strip led for the bar cabinet in the main saloon

Additional full height cabinet on the back of the TY in the gym area

#### EQUIPMENT INTERIOR FURNITURE:

N 02 Pullman bed instead of the fixed single bed in guest cabin

Bar-top in Sahara Noir marble, polished finish in the main salon

Additional cabinet underneath the stairs

Additional vanity desk in VIP cabin

Additional covers on both galley sinks

Additional n.2 spotlights and mirror for VIP vanity desk

Supply and installation of n. 2 FLOS lamps mod. Flauta Riga H500

Owner cabin increased acoustic insulation behind bed panels Gym area

extra film applied inside the beach club windows Port+ Stbd + Door

#### SALON

N 2 swivel armchairs

N 2 lazy boy armchairs mod. Pillow by Poltrona Frau

Owner cabin: armchair mod. Blossom by Giorgetti Flybridge, dining area

N 1 dining table mod Crown by Flexform Mood with lazy susan

N 10 armchairs Jud it by Flexform Mood

#### EXTERIOR FURNITURE:

Exterior bar cabinet in L shape, with top in L shape, all in corian, sink and foldable faucet

Additional bar cabinet in the gym, with calacatta marble top and back splash

Additional bathroom in the gym without shower - marble excluded

Sun awning with two sails for the beach area

Sun awning for the stern area of the fly behind the Hard top

Aft beach area rod holder both sides

Modification of the beach area lighting support on the must

Aft Beach area LED lighting installation

Electric socket for electric fishing rod one in Port Side one Stbd Side

Flybridge

Searchlight with control panel in main helm station

Side windows with electric opening system

Air conditioning on fly bridge (including modifications and additional cabinets)

#### Deck

Sun awning for bow area

Underwater lights led 7000 lumen - 1 2 units

Lifting system for swimming platform

Aft main deck saloon electric door

Teak on bow area

Additional opening hatch on beach area

#### CERTIFICATIONS:

Rina Class Certificate for Pleasure Yachts

International Tonnage Certificate (Simplified Tonnage for LL<24m)