















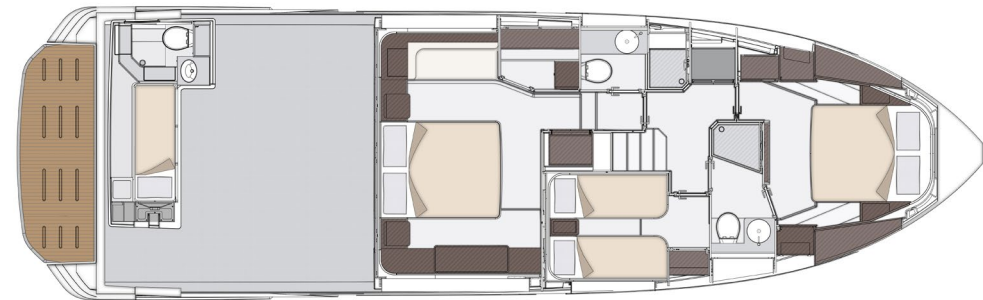
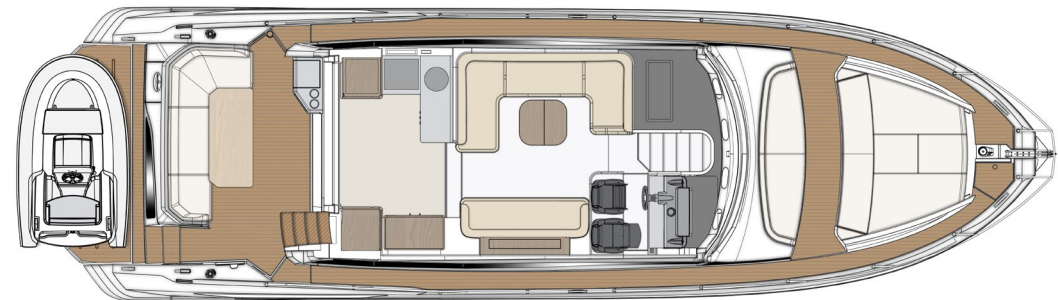
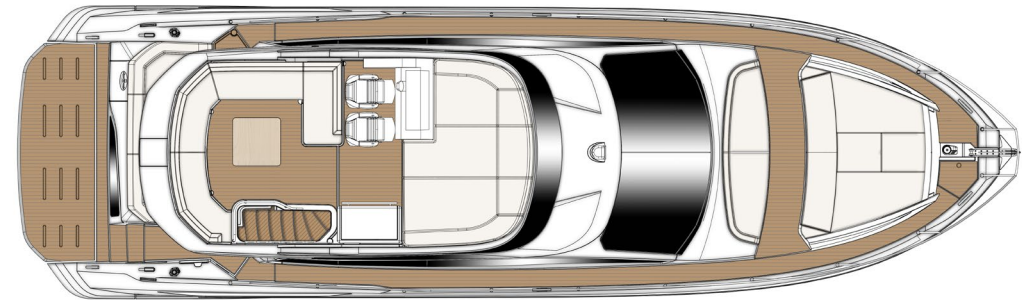


# TECHNICAL SPECIFICATION

## PRELIMINARY PROJECT DATA

Length overall (incl. pulpit)	16,78 m (55' 1")
Beam max	4,95 m (16' 3")
Displacement (at full load)	28.9 t
Engines	2 x Volvo IPS 950 D11 725 Hp
Maximum speed	up to 31 knots
Cruising speed	up to 27 knots
Fuel capacity	2400 l (634 US Gal)
Water capacity	590 l (156 US Gal)
Cabins	3 + 1
Berths	6 + 1
Head compartments	2 + 1
Building material	GRP
Exterior styling & concept	Alberto Mancini Yacht Design
Builder	Azimut Yachts

All performance specified in the table above are design data and apply to a standard configuration boat (standard equipment installed excluding tender, jet ski, etc.) with clean keel, propellers, and rudder. Furthermore, the performance levels indicated above have been defined under good sea and wind conditions (Beaufort Scale level 1, Douglas Scale level 1, ambient T < 25°, seawater T = 15°, atmospheric P = 103250 Pa) with 2 people on board, 25% fuel, and fresh, gray and black water tanks empty. Different or harsher sea conditions may significantly affect performance.





Azimut | Benetti SpA  
via Martin Luther King, 9 - 10051 Avigliana, Torino - Italy

[www.azimutyachts.com](http://www.azimutyachts.com)

Last updated 1.09.2019. This brochure in no way constitutes a contract of sale for the boatyard's vessels to any person or company and is a preliminary brochure prepared in good faith according to the most recent Azimut's rendering referred to the yacht herein represented; therefore the final product could be different according to subsequent Azimut's adjustments and updates. All information contained herein, including but not limited to technical and performance data, illustrations, and drawings, is non-binding and for purposes of illustration only and may not be fully representative of final product. Optional equipment, not part of the standard base product, are depicted and may require separate order. The information in this brochure refers to the boatyard's standard motoryacht models available as of the date of publication. Technical and descriptive information is valid only to the extent that it pertains to the specific vessel that is the subject of a purchase. Contract terms are valid only to the extent that they are contained in a contract of sale. This document is based on information available at the time of publication. Despite efforts to ensure the greatest possible accuracy, the information contained herein may fail to cover all details, omit technical or commercial changes that may have been made subsequent to publication, describe features that are not present, and fail to envisage all circumstances that might occur. Any illustrations, photographs, diagrams and examples shown in this brochure are included solely for illustrative purposes. Due to the different features of each vessel, the boatyard assumes no liability for actual use based on the illustrated applications.

